

*shiloh*TM
C A B I N E T R Y

Elegance in Wood



Paint Finishes

Color is everything, and painted finishes provide limitless possibilities, which is why Shiloh Cabinetry offers so many choices. Our diverse collection of standard paint colors is only the beginning. For those with a particular color in mind, our custom paint program lets you choose from the entire Sherwin-Williams' palette of paint colors. Visit your local retailer for more details.

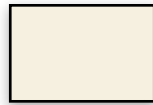
PAIN



Arctic



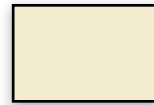
Polar



Soft White



Eggshell



Ivory



Beige



Taupe



Repose Gray



Mindful Gray



Dovetail Gray



Brick Red



Naval



Black

GLAZE AND HIGHLIGHT AVAILABLE ON PAINT

Shiloh also offers additional finish techniques on paint. Available on most paint colors, our glaze or highlight options add an extra level of character for a more antiqued appearance. The brushing add-on is only available with a highlight and adds subtle brush strokes to the highlighting process. Variation of intensity and direction are common and expected with all glazes, highlights and brushing techniques.



Nickel glaze



Mocha glaze



Van Dyke Glaze



Black Glaze



Slate Highlight



Cafe Highlight



Cafe Highlight w/
Brushing*



Finish
Wood Species
Door Style

ARCTIC
MAPLE
SQUARE FLAT (BEADED INSET)

Stain Finishes

The beauty of wood is showcased with our carefully selected palette of stains. Our staining process enhances the various wood species that we offer, resulting in a beautifully finished piece of furniture for your home. When you add a glaze or highlight to one of our stains, you add an extra layer of depth and a change to the color tone, for even more possibilities. From traditional colors to modern interpretations, with Shiloh Cabinetry we are sure you will find the perfect finish.

MAPLE



Natural



Golden



Cashmere



Acorn*



Spice



Cayenne



Sable



Cocoa



Merlot



Espresso



Silas*



Sea Green

ALDER & RUSTIC ALDER



Natural



Caramel



Walnut



Sierra



Umber



Bistre



Espresso



Silas*

CHERRY



Natural



Medium



Coffee



Red



Bourbon



Brandy



Espresso



Silas*

OAK



Natural



Medium



Harvest



Autumn



Espresso



Silas*

SELECT POPLAR



Seagull**



Sandalwood**



River Rock**



Heatherstone**



Carbon**

OAK (NATURAL ELEMENTS COLLECTION)



Flagstone**



Clay**



Mineral**



Morel**



Creekside**



Bark**



Dusk**

AMERICAN POPLAR



Cadet**



Harbor**

HICKORY



Natural



Medium



Chestnut



Silas*

GLAZES AVAILABLE ON STAIN

Add even more character to your finish. With several options of glazes or a subtle highlight, our hand-wiped process adds a layer of color that changes the underlying stain for a deeper, richer appearance. As this is a hand-applied technique, variation in the amount and location of glaze material will vary from piece to piece and within the same piece. Variation adds to the character and should be expected.



Nickel Glaze



Mocha Glaze



Van Dyke Glaze



Black Glaze



Graphite Highlight

*requires a glaze or highlight

**not available with glaze or highlight

Inspiration Gallery



Color HERITAGE GRAY (OLDE WORLD)
Wood Species RUSTIC ALDER
Door Style RICHMOND



Color SOFT WHITE
Wood Species MAPLE
Door Style SQUARE FLAT (FLUSH INSET)



Color
Wood Species
Door Style

SEAGULL
SELECT POPLAR
SQUARE FLAT (BEADED INSET)



Color MEDIUM CHERRY
 Wood Species HANOVER
 Door Style



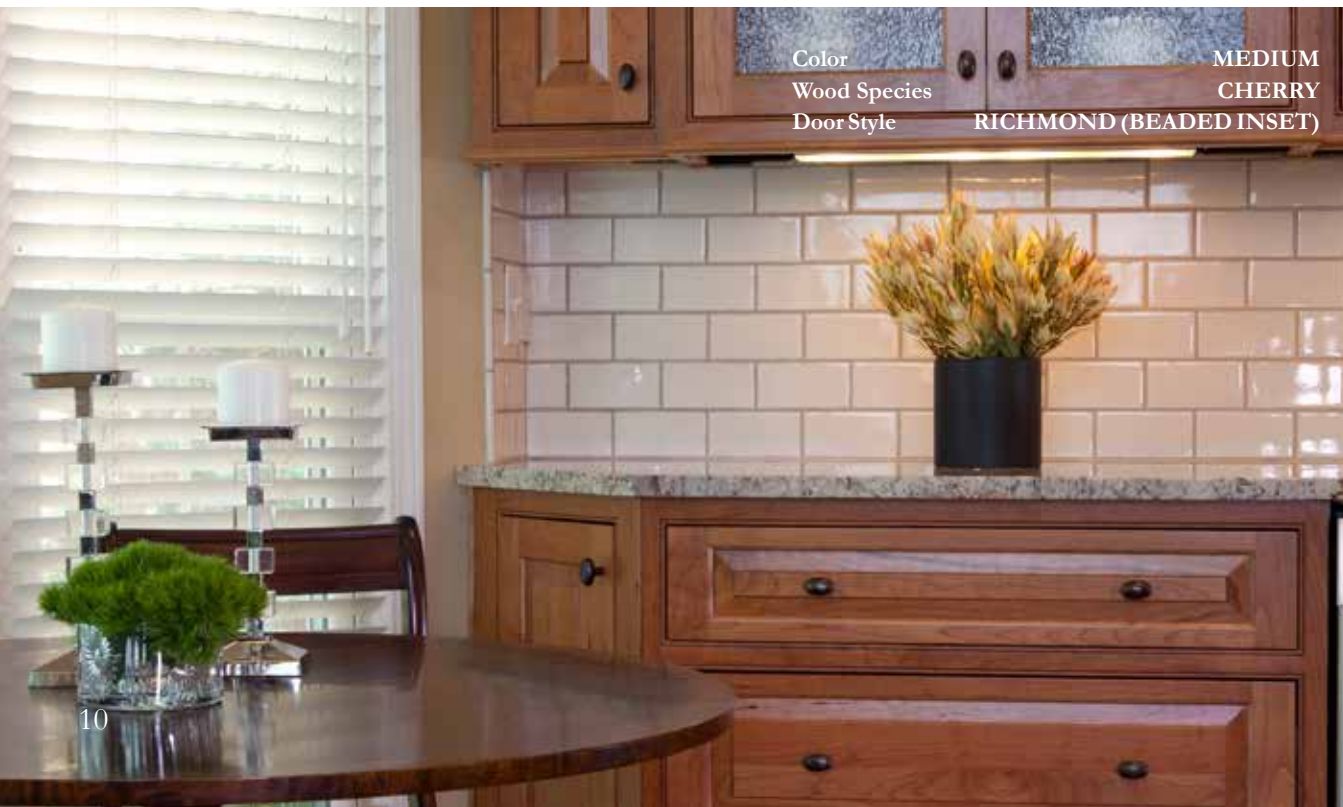
Color ARCTIC W/SLATE HIGHLIGHT
 Wood Species MAPLE
 Door Style BRISTOL (FLUSH INSET)



Color SOFT WHITE W/CAFE HIGHLIGHT
 Wood Species MAPLE
 Door Style MONTGOMERY (BEADED INSET)



Color ARCTIC
Wood Species MAPLE
Door Style SQUARE FLAT (BEADED INSET)



Color MEDIUM
Wood Species CHERRY
Door Style RICHMOND (BEADED INSET)



Color POLAR W/SLATE HIGHLIGHT
& COLONIAL BLUE
Wood Species MAPLE
Door Style SQUARE FLAT (FLUSHINSET)



Color

SOFT WHITE W/CAFE HIGHLIGHT
& DOVETAIL GRAY

Wood Species

MAPLE

Door Style

CHARLESTON (FLUSH INSET)



Door Overlay & Inset Options

Shiloh Cabinetry offers the ultimate in flexibility with five types of framed cabinetry to combine with our great collection of door styles and finishes. With most Shiloh door styles available in any of the overlay or inset options below, just select your favorite door and finish and combine it with an overlay or inset cabinet style. Whether your kitchen design style suits overlay or inset, Shiloh has you covered.

Standard Overlay

Full Overlay

3/8" Inset

Flush Inset

Beaded Inset



Door Styles



ARCH RAISED
Golden
Maple



ASHERVILLE
Barnwood (Weathered)
Rustic Alder



ASPEN
Cashmere w/Mocha Glaze
Maple



BEADED CENTURY
Autumn w/Black Glaze
Oak



BRADFORD
Brick Red W/Black Glaze
Maple



BRISTOL
Brandy w/Black Glaze
Cherry



CHARLESTON
Medium w/Mocha Glaze
Rustic Alder (Distressed)



CROWN RAISED
Autumn
Oak



DALTON
Oatmeal (Weathered)
Maple



ESSEX
Dovetail Gray
Maple

Door Styles



GLENBROOK
Durango (Olde World)
Maple



GREENSBORO
Arctic w/Cafe Highlight
Maple



HANOVER
Flagstone
Oak (Natural Elements)



HARTFORD
Carbon
Select Poplar



HERITAGE
Walnut w/Black Glaze
Rustic Alder



KENDALL
Bourbon
Cherry



LANCASTER
Merlot w/Black Glaze
Maple



LANDES
Silas w/Graphite Highlight
Clear Alder



MANCHESTER
Spice w/Black Glaze
Maple



METROPOLITAN
Red w/Black Glaze
Cherry



Finish CREEKSIDE
 Wood Species OAK (NATURAL ELEMENTS)
 Door Style GREENSBORO (BEADED INSET)



Finish RIVER ROCK
 Wood Species SELECT POPLAR
 Door Style ASPEN (BEADED INSET)



MONTGOMERY
 Cayenne
 Maple



NEW HAVEN
 Morel
 Oak (Natural Elements)



OXFORD- SCULPTED DF
 Bourbon w/Van Dyke Glaze
 Cherry



OXFORD
 Custard (Olde World)
 Maple



PORTLAND
 Natural w/Mocha Glaze
 Rustic Alder



RICHMOND
Polar w/Slate H.L. & Brushing
Maple



SAVANNAH
Seagull
Select Poplar



SHELBY
Eggshell w/Slate Highlight
Maple



SOMERSET
Sierra w/Black Glaze
Rustic Alder



SQUARE FLAT
Chestnut
Hickory



SQUARE RAISED
Cocoa
Maple



STATESVILLE
Clay
Oak (Natural Elements)



SUMMIT
Spice w/Black Glaze
Maple



WILMINGTON
Heatherstone
Select Poplar



WINDSOR
Coffee w/Black Glaze
Cherry

Drawer Front Options

All of the Shiloh door styles are available in Select Poplar, Maple, Oak, Hickory, Cherry, Alder, American Poplar or Painted finishes. Door styles are available with a traditional slab style drawer front with matching door edge profiles, shaped slab drawer fronts or matching five-piece drawer fronts. The Sculpted, Square Raised, Richmond and Oxford Panel shaped drawer fronts feature a more decorative profile that will not match the door edge profiles exactly. For an appearance similar to the door style, choose the matching five piece drawer front with matching edge profile.

Oxford Door with
Slab Front

Hanover Door with
Hanover 5-pc Front

Richmond Door with
Richmond Shaped Front

Oxford Door with
Oxford Shaped Front

Aspen Door with
Sculpted Front

Square Raised Door with
Square Raised Shaped Front



Specialty Finishes

OLDE WORLD

Olde World is a painted finish hand-distressed to simulate an aged and heavily worn appearance. Olde World features a pre-defined set of eight paint colors and finish techniques. The Olde World finish features the following exclusive finish techniques: Worm holes, edge and panel gouging, rock dents, wearing water spots, dry brush glaze and a mocha highlight glaze. Olde World is available on any wood species.



Custard



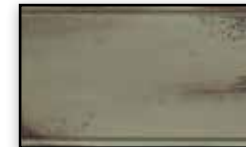
Cornsilk



Heritage Gray



Jade Green



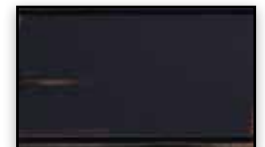
Durango



Colonial Blue



Cordovan



Ebony

WEATHERED

Shiloh's Weathered finish simulates an aged appearance using specially selected stain colors and finish techniques. Each of the seven pre-defined stain colors are featured on a specific wood species. Exclusive finish techniques featured are: Worm holes, edge and panel gouging, rock dents, wearing, fly specking, dry brush glaze and black highlight.



Oatmeal



Gunstock



Wiley



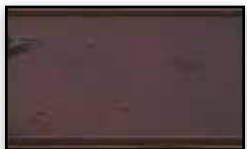
Tobacco



Barnwood



Roasted Pepper



Rosewood



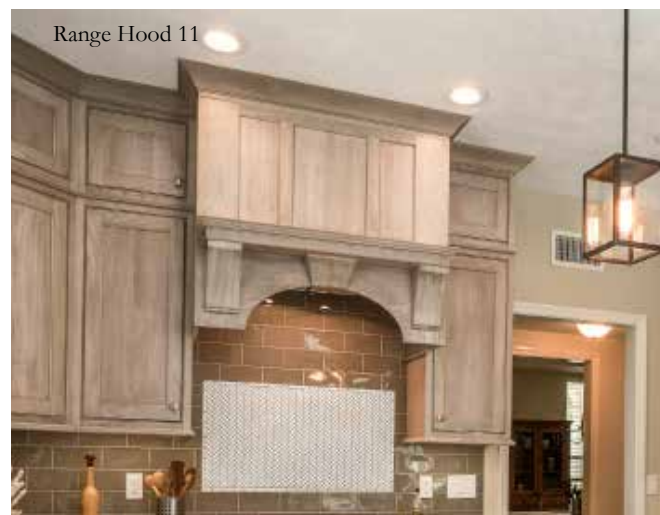
Color
Wood Species
Door Style

BARNWOOD
RUSTIC ALDER
SQUARE RAISED PANEL

Decorative Wood Hoods



As the centerpiece of most kitchens, the range hood should be functional and beautiful. Shiloh has one of the most extensive wood hood offerings in the industry. With more than 40 unique styles, flexible sizing and all of Shiloh's finish options, our hoods will make a statement in any kitchen. Our hoods are built by our own craftsmen and have been carefully engineered for appeal, functionality, and ease of installation.



Furniture Vanities

Shiloh's furniture vanities feature custom styling and access to our wide array of finishes. Each style features a specific construction method and is built by one of our expert craftsmen. Choose from a multitude of unique styles in single or double bowl configurations. With multiple sizes, door styles and finishes available, our furniture vanities are a simple way to customize a bathroom.



Vanity Tall Custom 5



Vanity Tall Custom 28



Vanity Tall Custom 27



Color

Wood Species

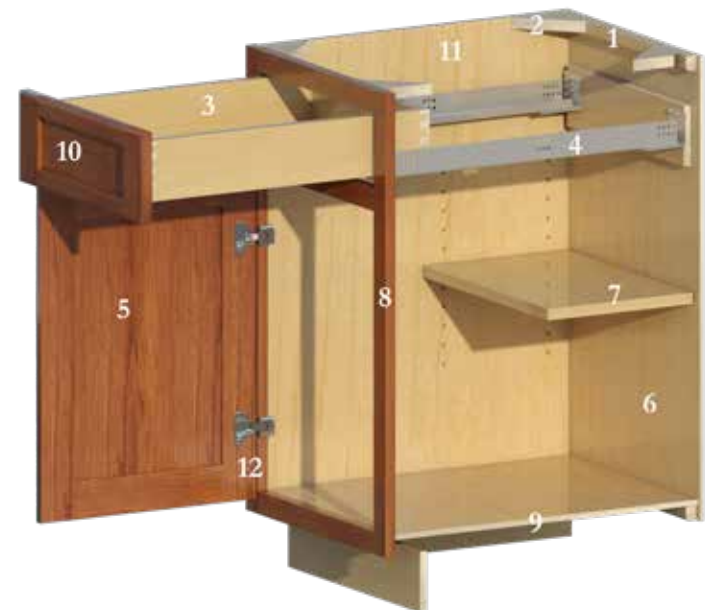
Door Style

WALNUT W/VAN DYKE GLAZE &
SOFT WHITE W/NICKEL GLAZE
RUSTIC ALDER & MAPLE
WINDSOR (BEADED INSET)

Shiloh Construction

Shiloh Cabinetry's construction is an example of the commitment to long-term durability. Our cabinets feature quality components and construction methods throughout. Compare our cabinet construction against the competition and you will see why Shiloh stands out against the rest.

1. Solid wood hanging rail for secure fastening to the wall
2. Solid wood corner blocks in base cabinets add strength and stability
3. 5/8" hardwood dovetail drawer standard (3/4" hardwood dovetail available)
4. Guides are Blum TANDEM edge 7/8" extension with integrated BLUMOTION soft closing mechanism standard (optional Blum TANDEM full extension guides with integrated BLUMOTION soft closing mechanism)
5. Solid wood door (except painted, Metropolitan, and thermofoil doors)
6. Durable and easy to clean material
7. 3/4" plywood adjustable shelving with solid metal shelf clips
8. 1 1/2" wide solid wood frames
9. 3/8" plywood bottom and top (on wall cabinets)
10. Catalyzed conversion varnish topcoat that is smooth, very durable, and resistant to most household chemicals
11. 1/2" plywood sides with 1/4" wood veneer (stained) or 1/4" MDF (painted) applied on finished ends
12. Blum 6-way adjustable, soft-close, concealed hinges in standard or full overlay and flush or beaded inset (3/8" partial inset uses knife hinge that does not soft-close)



shilohTM

C A B I N E T R Y

www.shilohcabinetry.com

Manufactured by W. W. Wood Products, Inc.
A family owned company



Due to limitations in printing or changes in manufacturing, the finishes and products shown may not be accurately represented or are no longer available. Visit a retailer to view samples and confirm availability.



LIT-SFLB 6/17