

R. Christensen
Premium Hardware Since 1879®



ART TECH

THE FINE ART OF SELF EXPRESSION

ART TECH

DESIGN

CONTEMPORARY, UNIQUE,
EUROPEAN STYLE

Art Tech is defined by clean precise lines
and elegant geometry.

These contemporary hardware designs
express a sense of style that is refined,
and luxurious. Minimal accents and high
gloss finishes highlight the sculptural
quality of each piece. This modern series
makes a bold statement in sleek design
spaces.

EXPRESS YOUR STYLE

MAKE A STATEMENT

Present your modern space with luxury
and sophistication. Express yourself in a
way that defines your sense of personal
style.

THE FINE ART OF SELF EXPRESSION

R. Christensen
Premium Hardware Since 1879

Berenson

EXTREME FINISHES

Extreme finishes exceed KCMA
finish standards by 10X.

Extreme finish durability for long
lasting endurance of hardware.

ISO 14001 STANDARD

Efficiently uses both energy and
material, reducing pollutants and
waste.

Supports continuous improvements
in environmental sustainability.

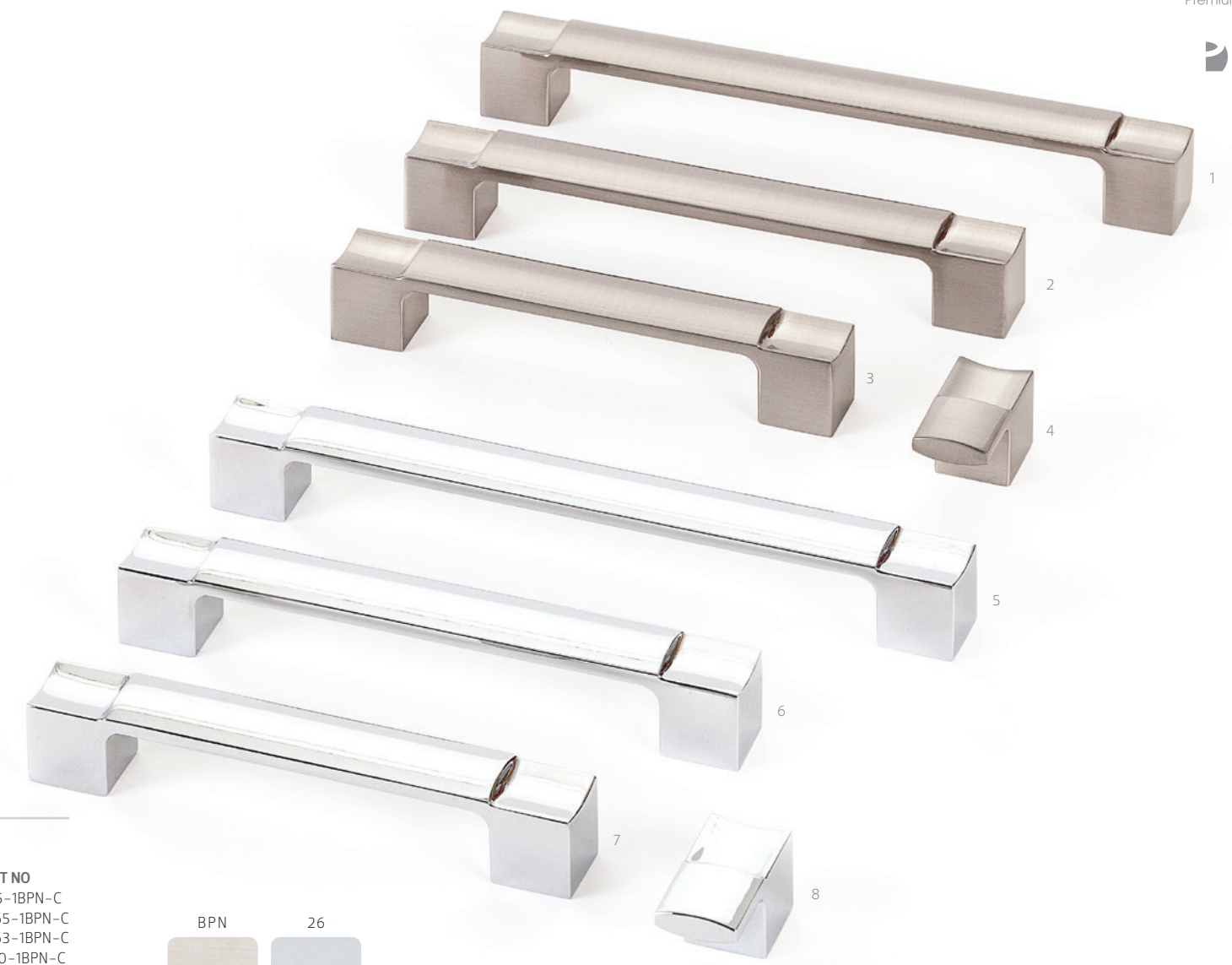
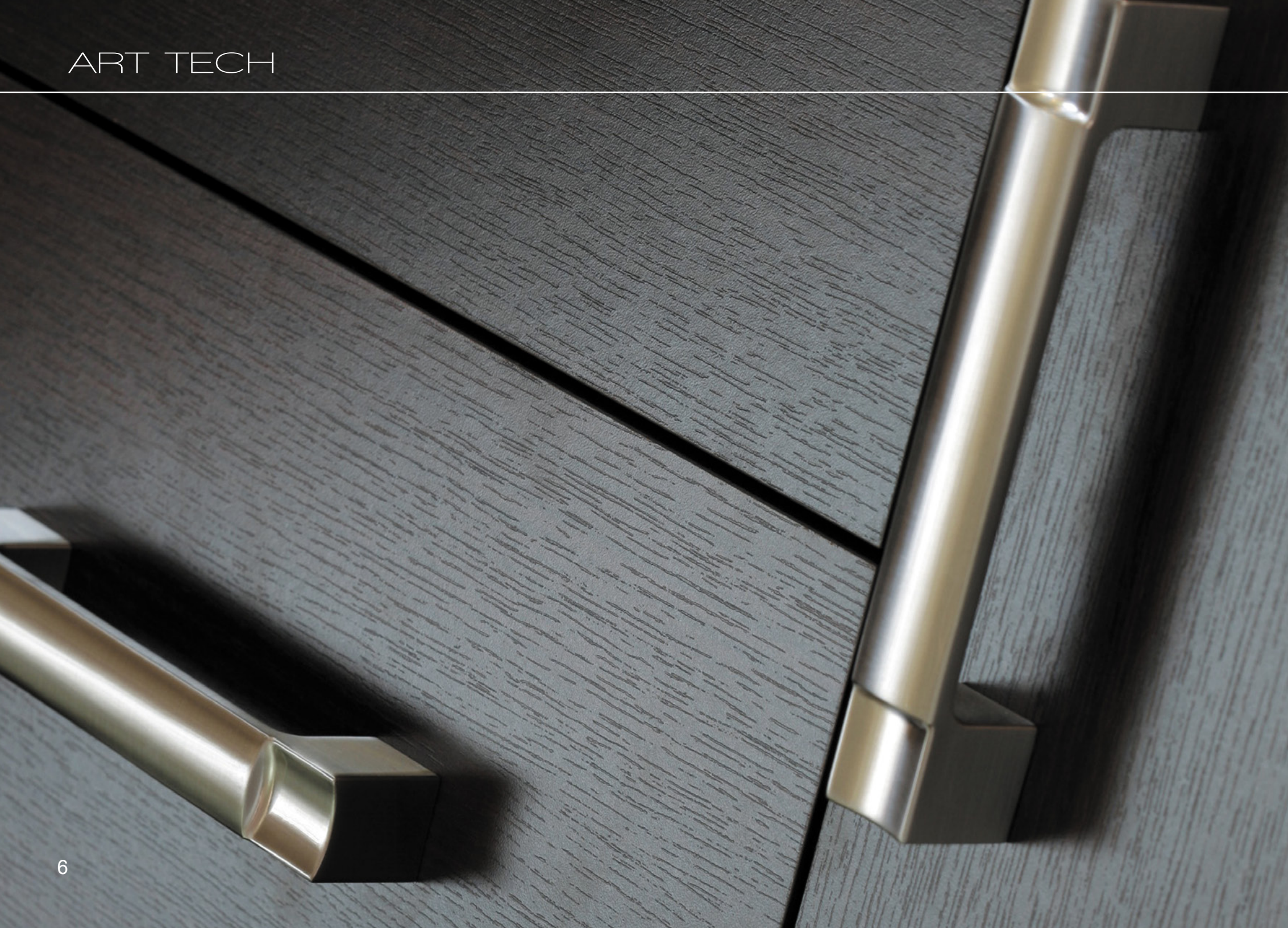
LOOK FOR THESE
ICONS THROUGHOUT



STRUCTURE

#	CC	L	W	H	TAP	PART NO
1	192mm	8 1/2	1	1 1/8	M4	9679-4000-C
2	160mm	7 1/4	1	1 1/8	M4	9678-4000-C
3	128mm	5 7/8	1	1 1/8	M4	9677-4000-C
4		2	1	1 1/8	M4	9680-4000-C

FINISH | BLACK/SILVER



SEGMENT

#	CC	L	W	H	TAP	PART NO
1	192mm	8 3/8	7/8	1 1/8	M4	4115-1BPN-C
2	160mm	7 1/8	7/8	1 1/8	M4	9465-1BPN-C
3	128mm	5 7/8	7/8	1 1/8	M4	9463-1BPN-C
4		1 3/4	7/8	1 1/8	M4	4120-1BPN-C
5	192mm	8 3/8	7/8	1 1/8	M4	4112-1026-C
6	160mm	7 1/8	7/8	1 1/8	M4	9464-1026-C
7	128mm	5 7/8	7/8	1 1/8	M4	9459-1026-C
8		1 3/4	7/8	1 1/8	M4	4117-1026-C

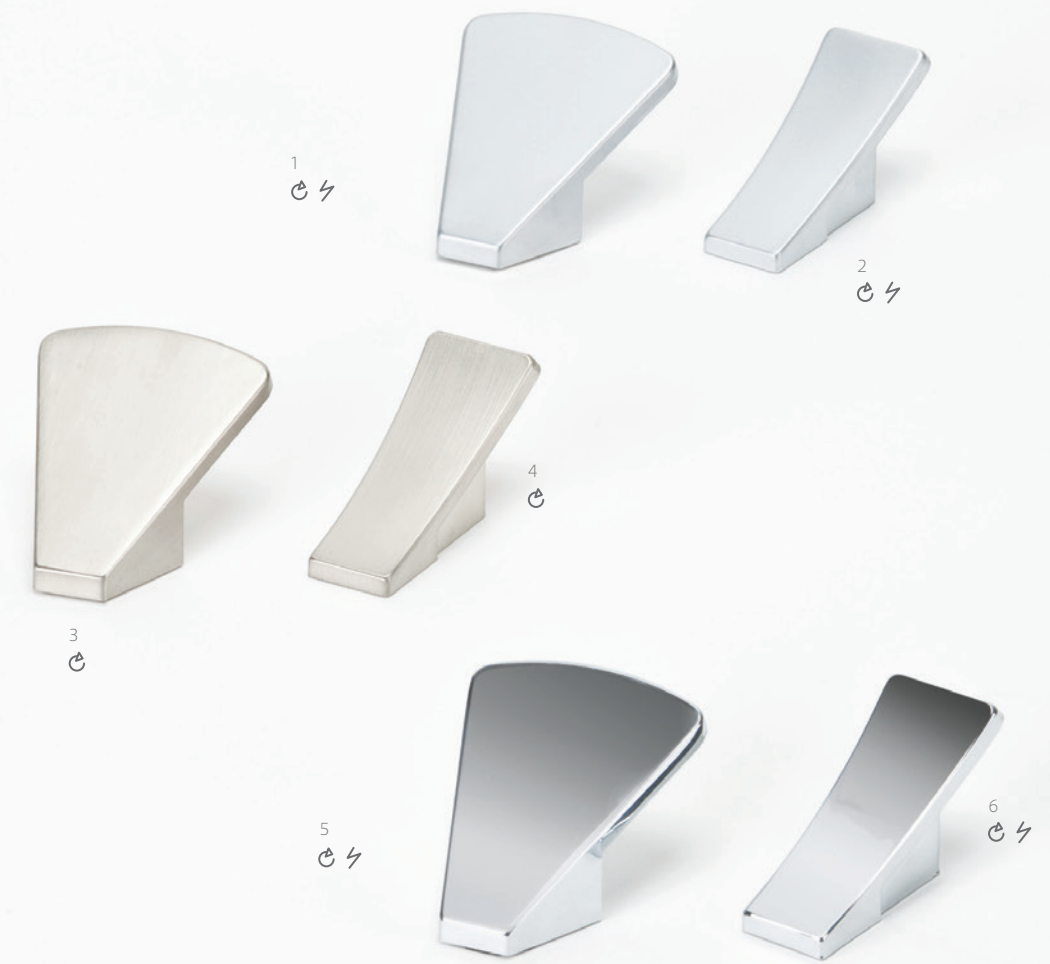




LEVEL

#	CC	L	W	H	TAP	PART NO
1	192mm	15 3/8	3/8	17/16	M4	9453-1000-C
2	160mm	14 3/16	3/8	17/16	M4	9452-1000-C
3	128mm	12 15/16	3/8	17/16	M4	9451-1000-C
4	128mm	12 15/16	3/8	17/16	M4	9457-1000-C
5	32mm	2 15/16	3/8	17/16	M4	9458-1000-C

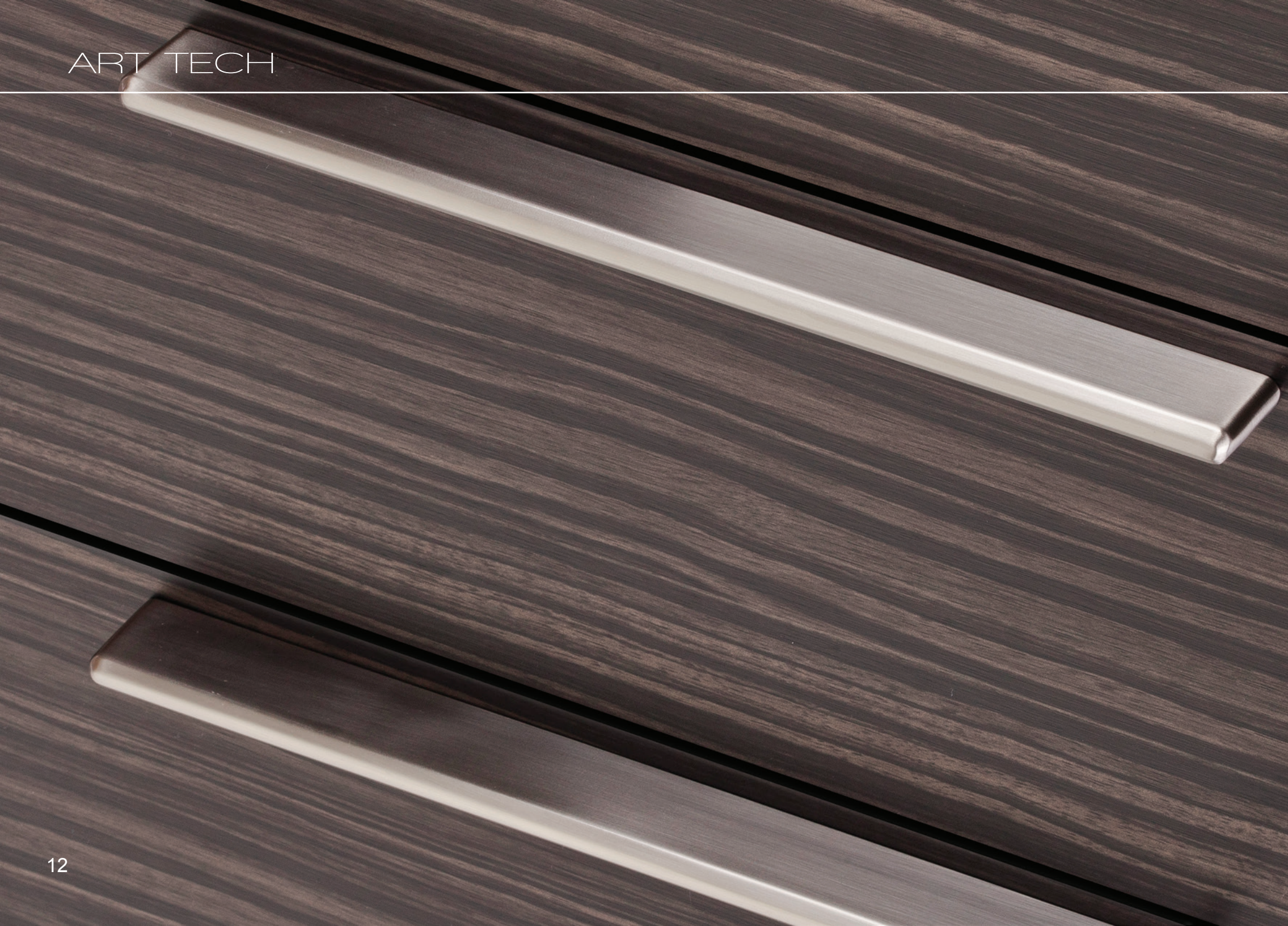
FINISH | BLACK/POLISHED CHROME



SLIDE

#	L	W	H	TAP	PART NO
1	2 1/8	2	1 7/16	M4	9280-10DC-P
2	2 1/8	1	1 3/16	M4	9277-10DC-P
3	2 1/8	2	1 7/16	M4	9278-1BPN-P
4	2 1/8	1	1 3/16	M4	9275-1BPN-P
5	2 1/8	2	1 7/16	M4	9279-1026-P
6	2 1/8	1	1 3/16	M4	9276-1026-P





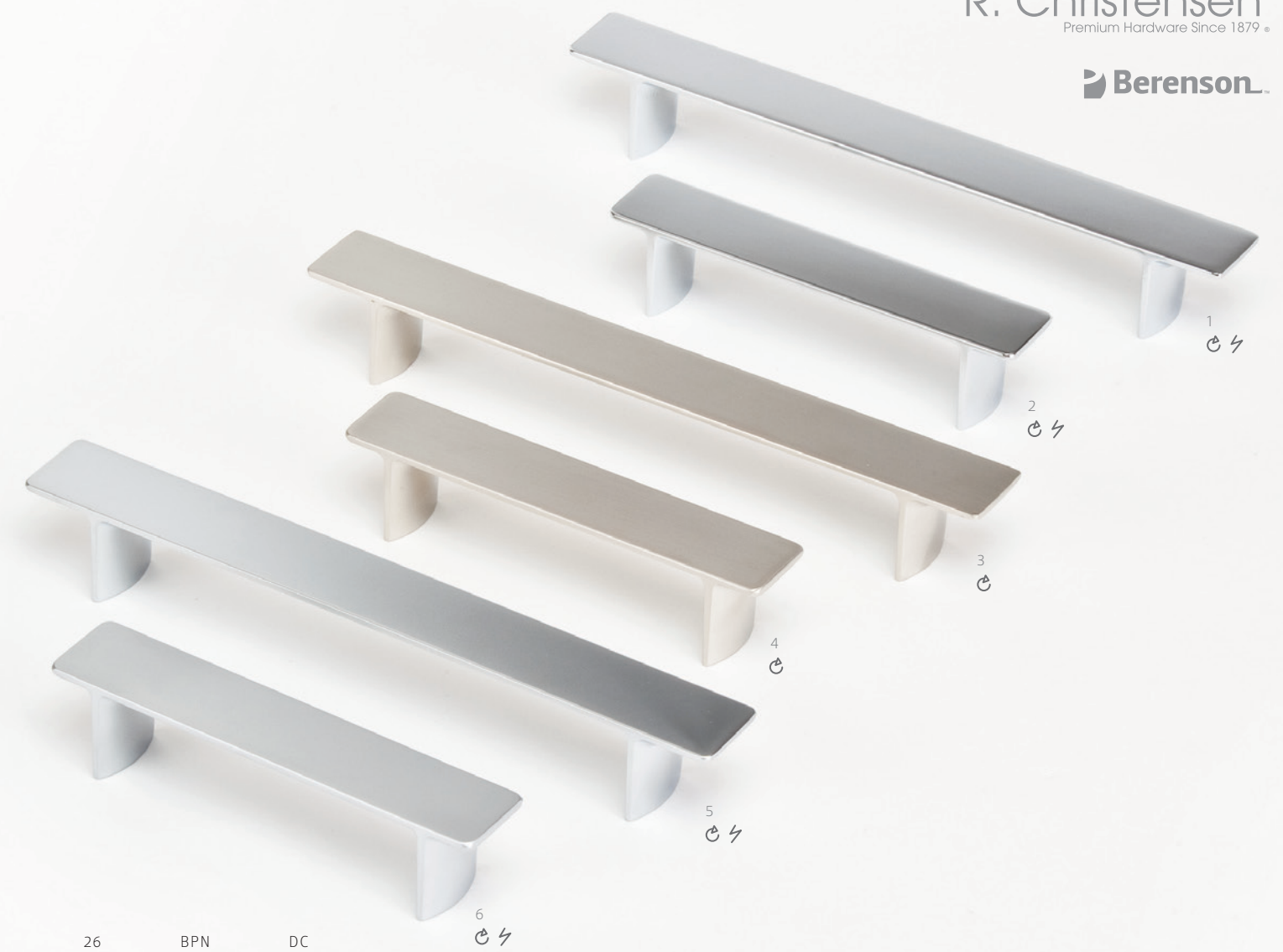
AXIS

#	CC	L	W	H	TAP	PART NO
1	224mm	9 1/8	5/16	1	M4	9687-1026-C
2	160mm	6 5/8	5/16	1	M4	9685-1026-C
3	32mm	1 1/2	5/16	1	M4	9683-1026-C
4	224mm	9 1/8	5/16	1	M4	9688-1BPN-C
5	160mm	6 5/8	5/16	1	M4	9686-1BPN-C
6	32mm	1 1/2	5/16	1	M4	9684-1BPN-C

26 BPN

POLISHED CHROME BRUSHED NICKEL



JAZZ

#	CC	L	W	H	TAP	PART NO
	288mm	13 1/8	1	1 13/16	M4	9742-1026-C*
	224mm	10 1/2	1	1 13/16	M4	9744-1026-C*
1	160mm	8	1	1 13/16	M4	9264-1026-C
2	96mm	4 7/8	1	1 13/16	M4	9267-1026-C
	288mm	13 1/8	1	1 13/16	M4	9741-1BPN-C*
	224mm	10 1/2	1	1 13/16	M4	9743-1BPN-C*
3	160mm	8	1	1 13/16	M4	9263-1BPN-C
4	96mm	4 7/8	1	1 13/16	M4	9266-1BPN-C
5	160mm	8	1	1 13/16	M4	9265-10DC-C
6	96mm	4 7/8	1	1 13/16	M4	9268-10DC-C

* New Addition to collection, not shown, visit website to view

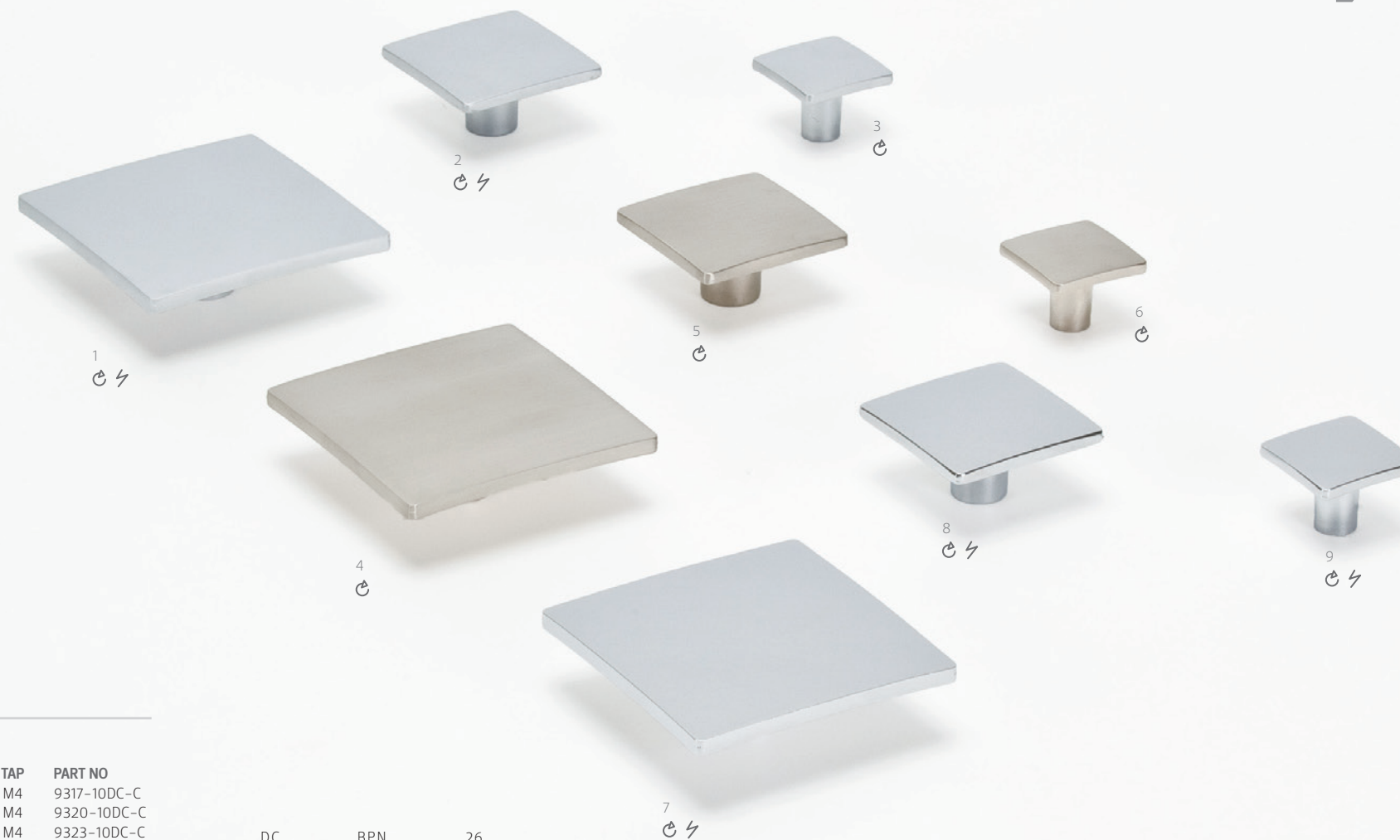




EDGE

#	CC	L	W	H	TAP	PART NO
1	160mm	7 3/8	5/16	1 3/8	M4	9271-10DC-C
2	96mm	4 7/8	5/16	1 3/16	M4	9274-10DC-C
3	160mm	7 3/8	5/16	1 3/8	M4	9269-1BPN-C
4	96mm	4 7/8	5/16	1 3/16	M4	9272-1BPN-C
5	160mm	7 3/8	5/16	1 3/8	M4	9270-1026-C
6	96mm	4 7/8	5/16	1 3/16	M4	9273-1026-C

DC	BPN	26
DULL CHROME	BRUSHED NICKEL	POLISHED CHROME



WAVE

#	L	W	H	TAP	PART NO
1	3 1/8	3 1/8	1 1/8	M4	9317-10DC-C
2	1 15/16	1 15/16	1	M4	9320-10DC-C
3	1 1/4	1 1/4	1	M4	9323-10DC-C
4	3 1/8	3 1/8	1 1/8	M4	9315-1BPN-C
5	1 15/16	1 15/16	1	M4	9318-1BPN-C
6	1 1/4	1 1/4	1	M4	9321-1BPN-C
7	3 1/8	3 1/8	1 1/8	M4	9316-1026-C
8	1 15/16	1 15/16	1	M4	9319-1026-C
9	1 1/4	1 1/4	1	M4	9322-1026-C





CONTOUR

#	CC	L	W	H	TAP	PART NO
1	160mm	7 7/8	1 1/4	1/2	M4	9682-1015-C
2	160mm	7 7/8	1 1/4	1/2	M4	9681-1026-C

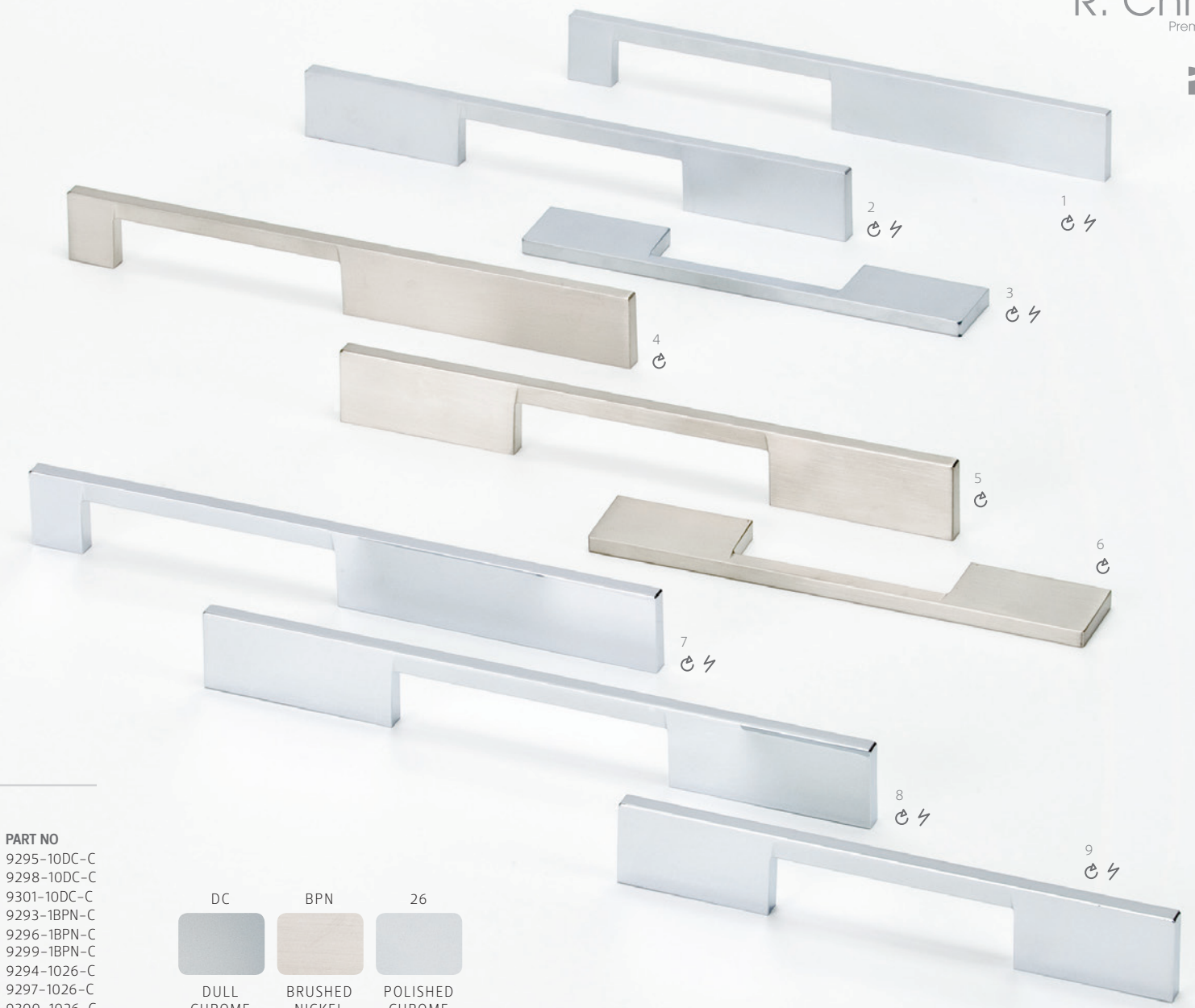
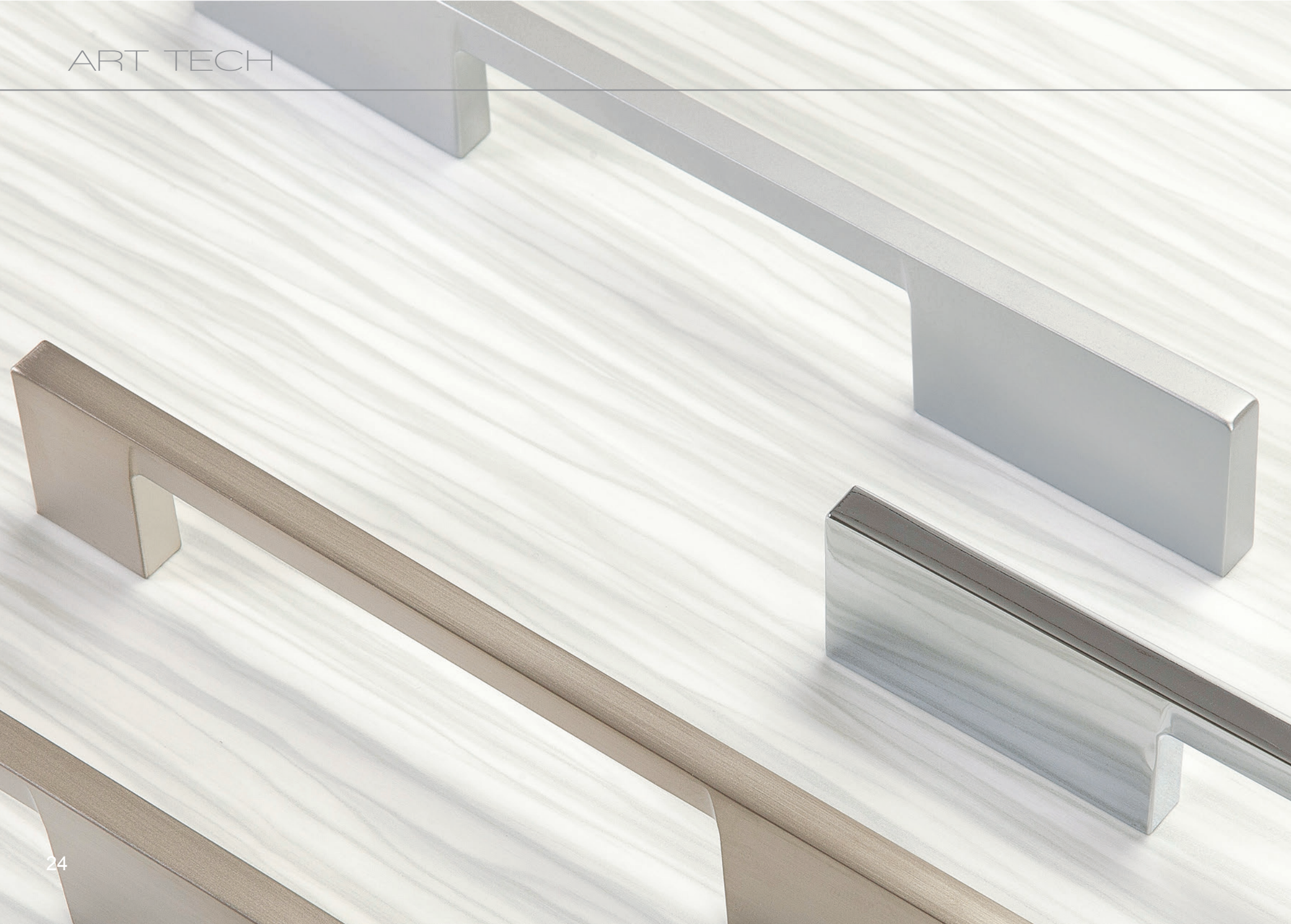




UP

#	CC	L	W	H	TAP	PART NO
1	64mm	3 9/16	3/8	2	M4	9737-1BPN-C
2	16mm	1 5/8	3/8	2 15/16	M4	9739-1BPN-C
3	64mm	3 9/16	3/8	2	M4	9738-1026-C
4	16mm	1 5/8	3/8	2 15/16	M4	9740-1026-C





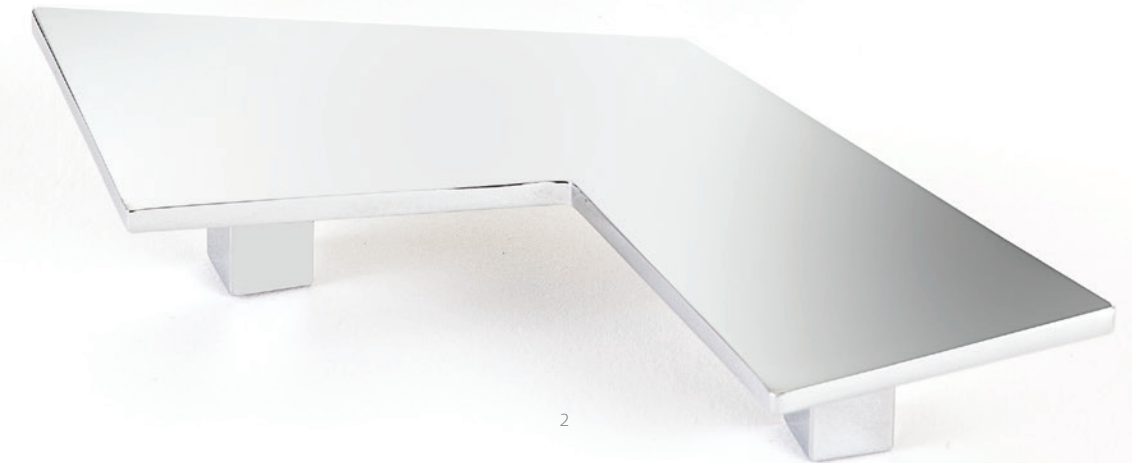
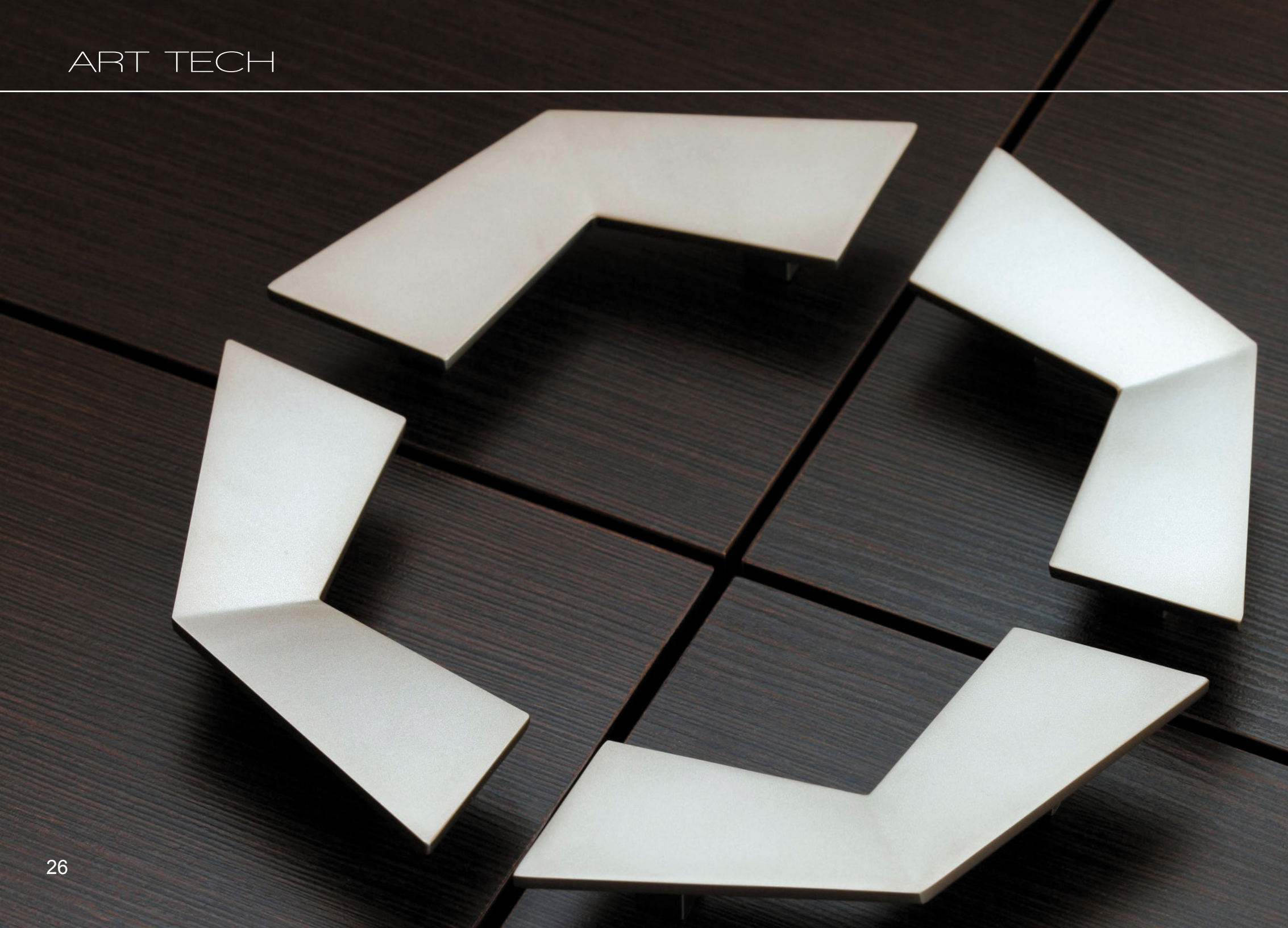
I-SPAZIO

#	CC	L	W	H	TAP	PART NO
1	192mm	10 1/4	1/4	1 1/4	M4	9295-10DC-C
2	192mm	10 1/4	1/4	1 1/4	M4	9298-10DC-C
3	128mm	7 7/8	1/4	1 1/4	M4	9301-10DC-C
4	192mm	10 1/4	1/4	1 1/4	M4	9293-1BPN-C
5	192mm	10 1/4	1/4	1 1/4	M4	9296-1BPN-C
6	128mm	7 7/8	1/4	1 1/4	M4	9299-1BPN-C
7	192mm	10 1/4	1/4	1 1/4	M4	9294-1026-C
8	192mm	10 1/4	1/4	1 1/4	M4	9297-1026-C
9	128mm	7 7/8	1/4	1 1/4	M4	9300-1026-C

DC BPN 26

DULL CHROME BRUSHED NICKEL POLISHED CHROME

Center pull on drawer, before drilling holes

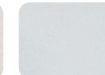


AERO

#	CC	L	W	H	TAP	PART NO
1	64mm	4 3/4	2	13/16	M4	4125-1BPN-C
2	64mm	4 3/4	2	13/16	M4	4123-1026-C

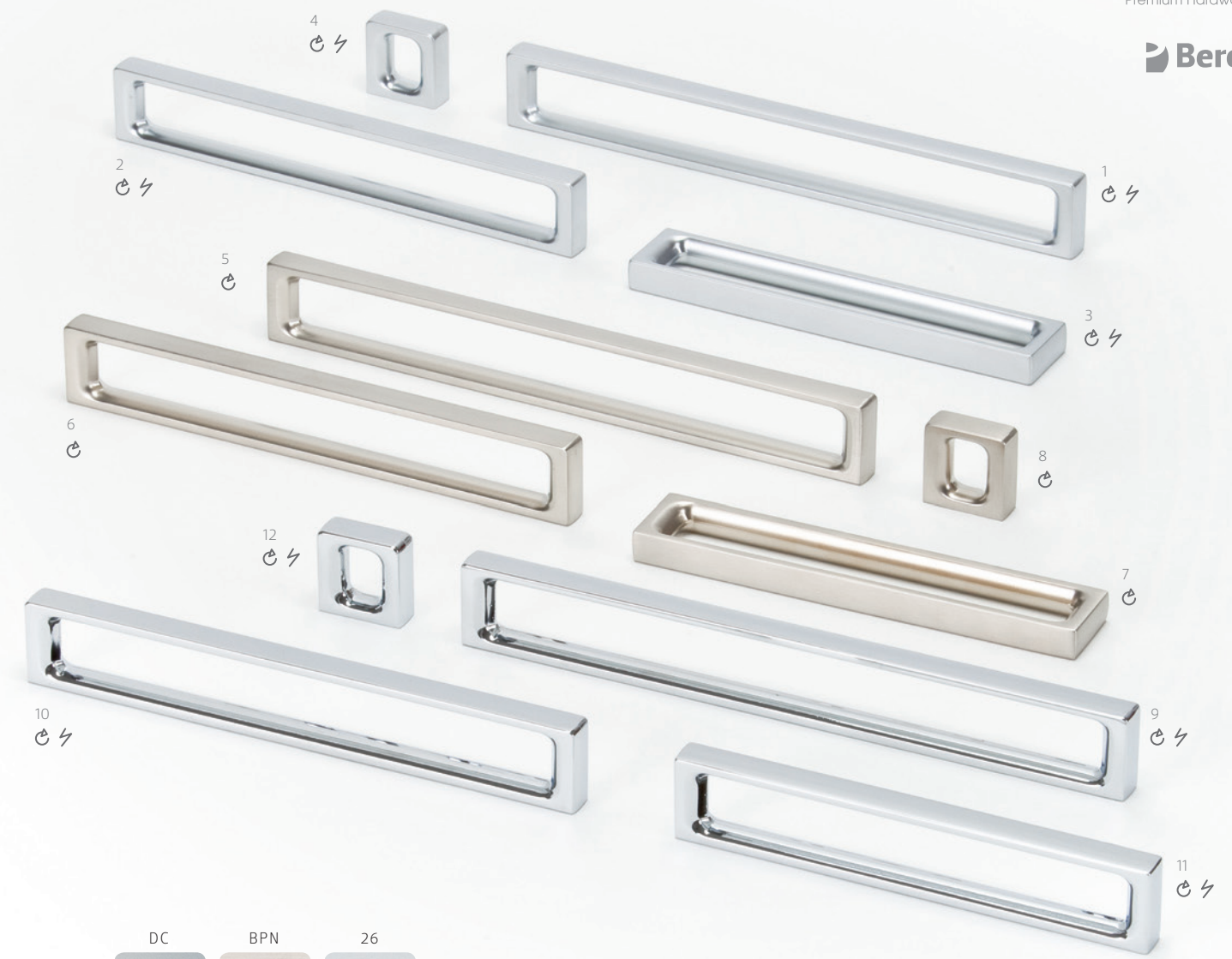
BPN

26



BRUSHED
NICKEL

POLISHED
CHROME



DUAL

#	CC	L	W	H	TAP	PART NO
1	192mm	7 7/8	3/8	1	M4	9304-10DC-C
2	160mm	6 5/8	3/8	1	M4	9307-10DC-C
3	128mm	5 3/8	3/8	1	M4	9310-10DC-C
4	16mm	1	3/8	1	M4	9314-10DC-C
5	192mm	7 7/8	3/8	1	M4	9302-1BPN-C
6	160mm	6 5/8	3/8	1	M4	9305-1BPN-C
7	128mm	5 3/8	3/8	1	M4	9308-1BPN-C
8	16mm	1	3/8	1	M4	9311-1BPN-C
9	192mm	7 7/8	3/8	1	M4	9303-1026-C
10	160mm	6 5/8	3/8	1	M4	9306-1026-C
11	128mm	5 3/8	3/8	1	M4	9309-1026-C
12	16mm	1	3/8	1	M4	9313-1026-C



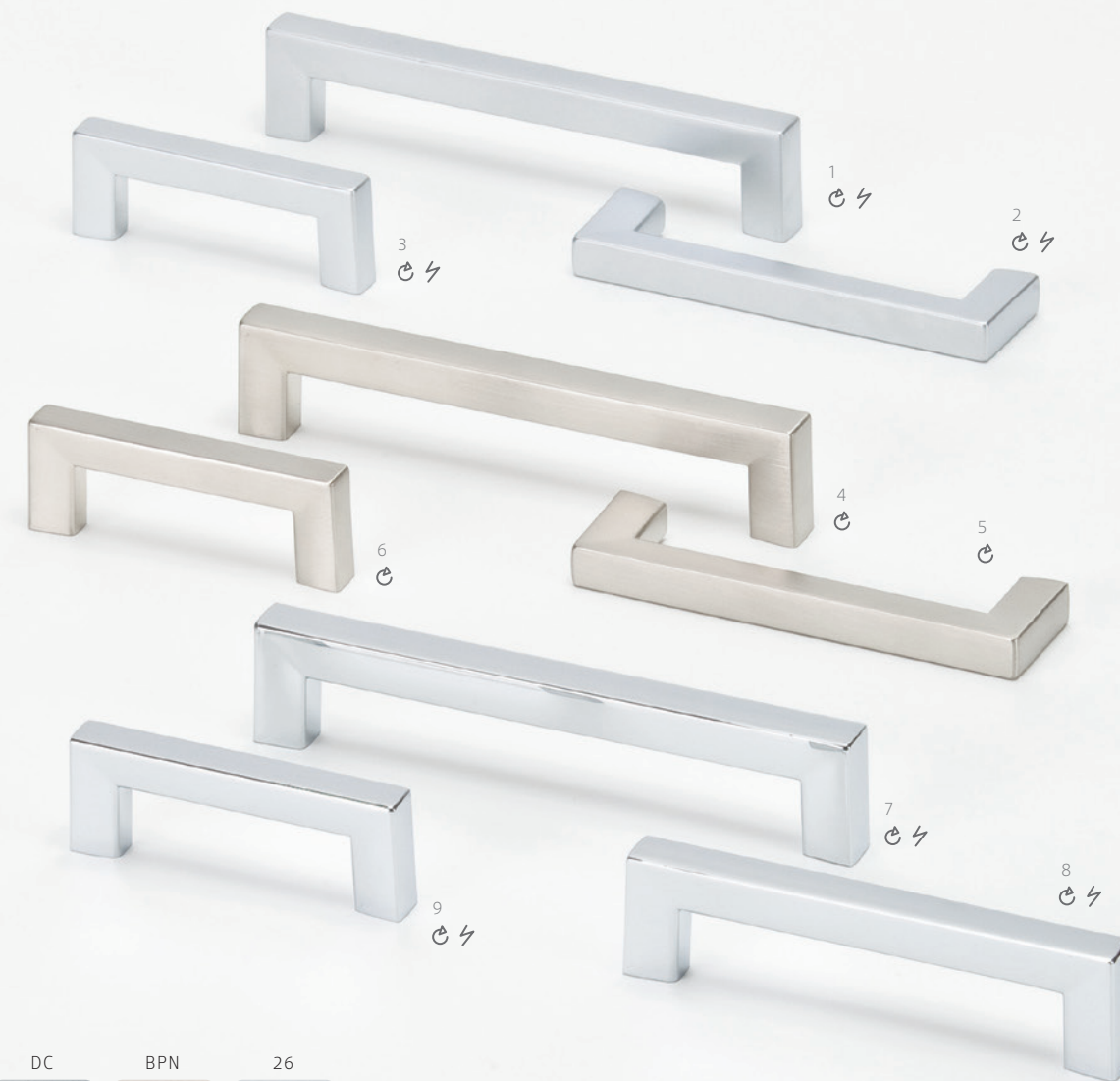
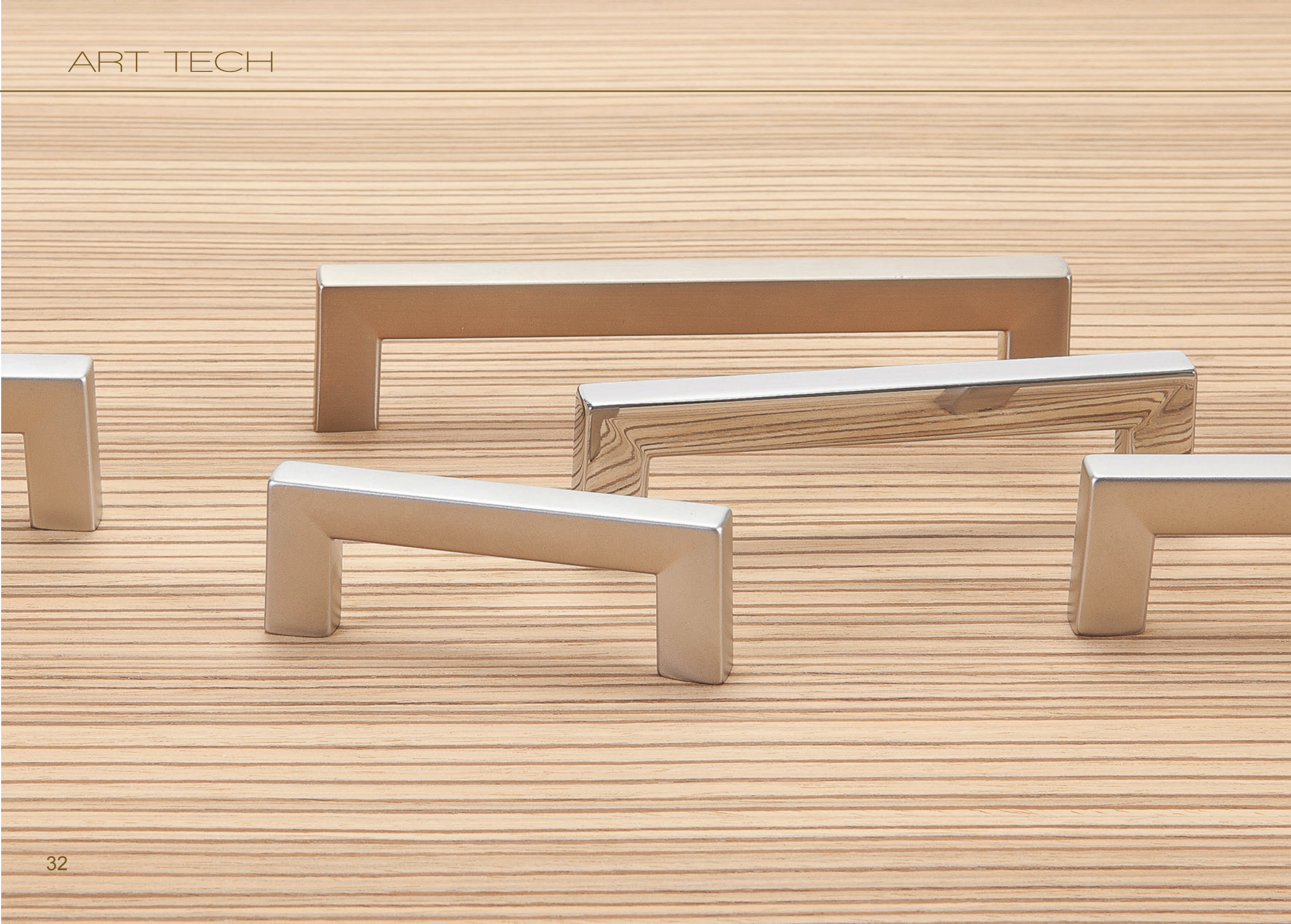


LUNGO

#	CC	L	W	H	TAP	PART NO
1	448mm	18	1/4	1 1/2	M4	9700-4026-C
	384mm	15 1/2	1/4	1 1/2	M4	9726-4026-C*
2	288mm	11 1/16	1/4	1 1/2	M4	9728-4026-C
	224mm	9 1/8	1/4	1 1/2	M4	9730-4026-C*
3	192mm	7 15/16	1/4	1 1/2	M4	9732-4026-C
	160mm	6 5/8	1/4	1 1/2	M4	9734-4026-C*
4	128mm	5 3/8	1/4	1 1/2	M4	9736-4026-C
	32mm	1 3/8	1/4	1 1/2	M4	9698-1026-C*
5	448mm	18	1/4	1 1/2	M4	9699-4BPN-C*
	384mm	15 1/2	1/4	1 1/2	M4	9725-4BPN-C
6	288mm	11 1/16	1/4	1 1/2	M4	9727-4BPN-C*
	224mm	9 1/8	1/4	1 1/2	M4	9729-4BPN-C
7	192mm	7 15/16	1/4	1 1/2	M4	9731-4BPN-C*
	160mm	6 5/8	1/4	1 1/2	M4	9733-4BPN-C
8	128mm	5 3/8	1/4	1 1/2	M4	9735-4BPN-C*
	32mm	1 3/8	1/4	1 1/2	M4	9697-1BPN-C

* Product not shown, visit website to view





SQUARE

#	CC	L	W	H	TAP	PART NO
1	128mm	5 3/4	1/2	1 3/16	M4	9286-10DC-C
2	96mm	4 1/2	7/16	1 3/16	M4	9289-10DC-C
3	64mm	3 1/8	3/8	1 3/16	M4	9292-10DC-C
4	128mm	5 3/4	1/2	1 3/16	M4	9284-1BPN-C
5	96mm	4 1/2	7/16	1 3/16	M4	9287-1BPN-C
6	64mm	3 1/8	3/8	1 3/16	M4	9290-1BPN-C
7	128mm	5 3/4	1/2	1 3/16	M4	9285-1026-C
8	96mm	4 1/2	7/16	1 3/16	M4	9288-1026-C
9	64mm	3 1/8	3/8	1 3/16	M4	9291-1026-C

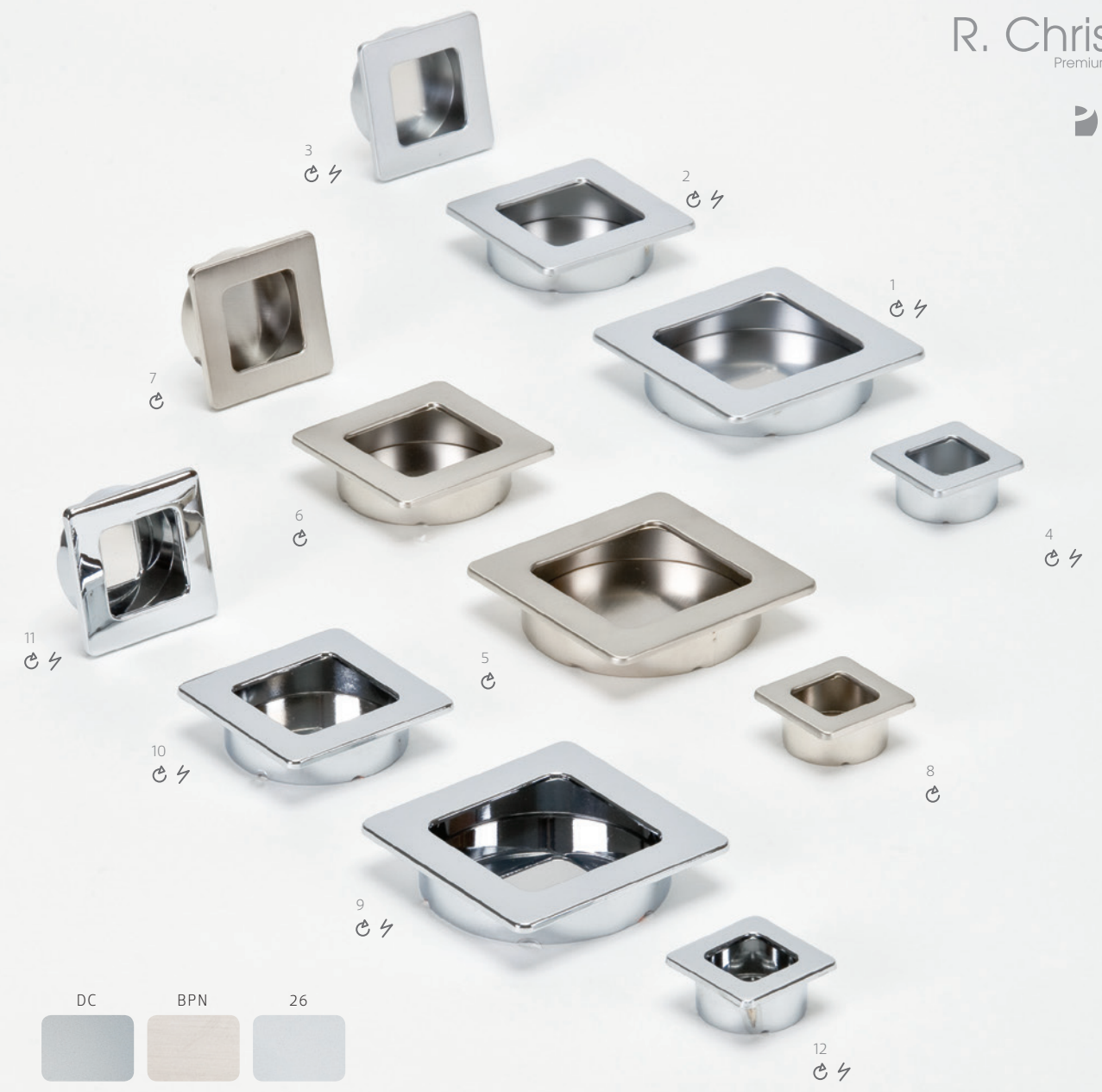
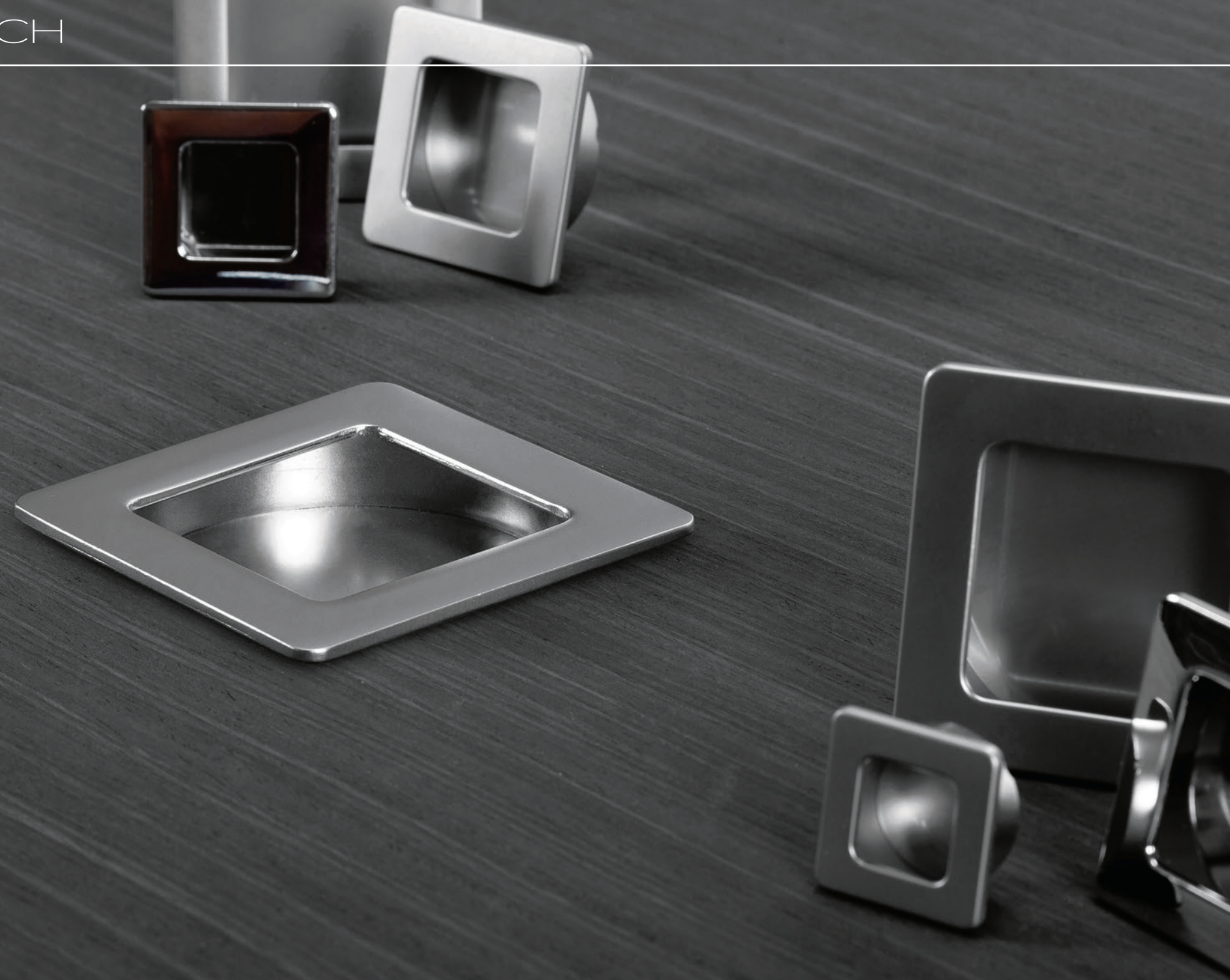




SEIZE

#	CC	L	W	H	TAP	PART NO
1	160mm	7 1/16	2	7/8	M4	9283-10DC-C
2	160mm	7 1/16	2	7/8	M4	9281-1BPN-C
3	160mm	7 1/16	2	7/8	M4	9282-1026-C





STYLUS



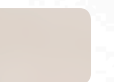
#	L	W	H	BORE	PART NO
1	2 1/2	2 1/2	1/2	60mm Ø x 11mm D	9326-10DC-C
2	1 7/8	1 7/8	1/2	45mm Ø x 11mm D	9329-10DC-C
3	1 1/2	1 1/2	1/2	35mm Ø x 11mm D	9332-10DC-C
4	1 1/8	1 1/8	1/2	26mm Ø x 11mm D	9335-10DC-C
5	2 1/2	2 1/2	1/2	60mm Ø x 11mm D	9324-1BPN-C
6	1 7/8	1 7/8	1/2	45mm Ø x 11mm D	9327-1BPN-C
7	1 1/2	1 1/2	1/2	35mm Ø x 11mm D	9330-1BPN-C
8	1 1/8	1 1/8	1/2	26mm Ø x 11mm D	9333-1BPN-C
9	2 1/2	2 1/2	1/2	60mm Ø x 11mm D	9325-1026-C
10	1 7/8	1 7/8	1/2	45mm Ø x 11mm D	9328-1026-C
11	1 1/2	1 1/2	1/2	35mm Ø x 11mm D	9331-1026-C
12	1 1/8	1 1/8	1/2	26mm Ø x 11mm D	9334-1026-C

DC	BPN	26
DULL CHROME	BRUSHED NICKEL	POLISHED CHROME



RECESS

#	CC	L	W	H	TAP	PART NO
1	202mm	8 3/8	3/4	1 13/16	M4	9794-1BPN-P
2	202mm	8 3/8	3/16	1 7/8	M4	9795-1BPN-P
3	128mm	7 1/16	11/16	5/8		9797-10DC-B
4	128mm	7 1/16	11/16	5/8		9796-1015-B

BPN	DC	15
		
BRUSHED NICKEL	DULL CHROME	SATIN NICKEL

R. Christensen
Premium Hardware Since 1879 ®



Find R. Christensen ® on the Berenson ® Facebook and Twitter pages

© Berenson Corp.

2495 MAIN STREET SUITE 111 | BUFFALO, NY
PHONE: 800.333.0578 | FAX: 716.833.2402
EMAIL: INFO@RCHRISTENSEN.COM